

A

B

C

D

E

F

G

H

1

2

3

4

5

6

7

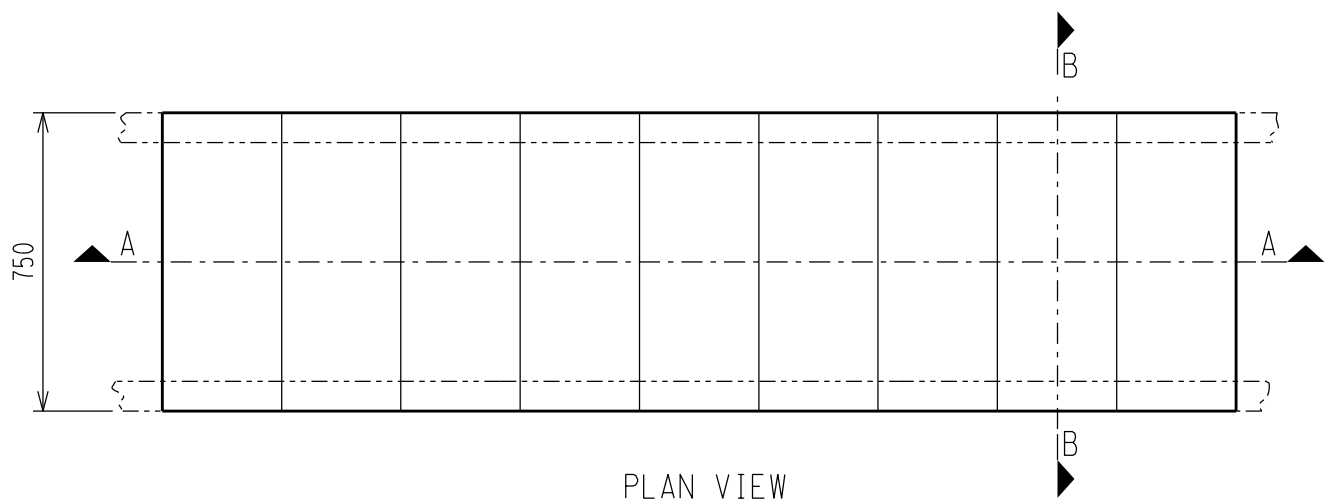
8

9

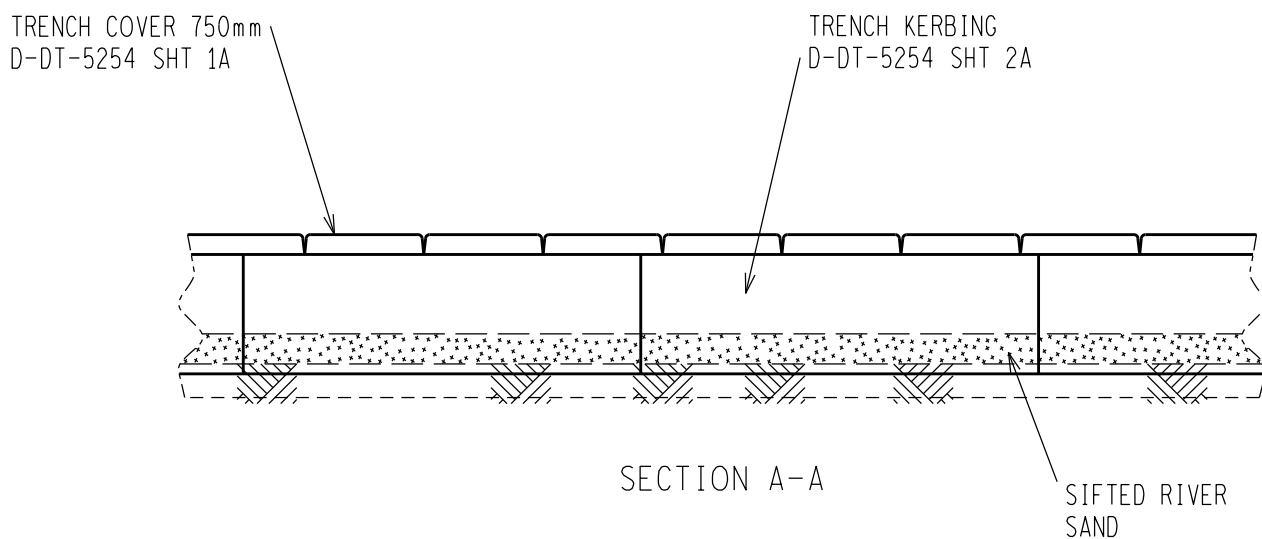
10

11

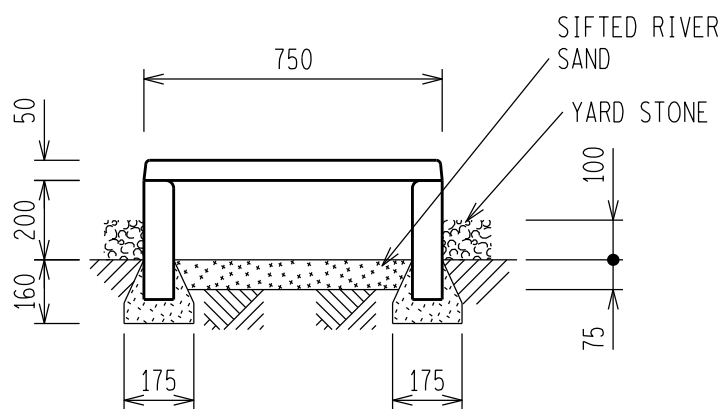
12



PLAN VIEW



SECTION A-A




SECTION B-B

NOTES:

- 1 FOR 750mm TRENCH COVER SEE DRAWING D-DT-5254 SHT 1A.
- 2 FOR TRENCH KERBING SEE DRAWING D-DT-5254 SHT 2A.
- 3 TRENCH KERBING TO BE PLACED ON CONCRETE FOOTING AS PER DETAIL.
- 4 TRENCH KERBING TO BE INSTALLED WITH ROUNDED EDGE TO INSIDE OF TRENCH TO PREVENT CABLE DAMAGE.
- 5 TRENCHES MUST NOT BE USED AS WALKWAYS.

D-DT-5254	SHEET 50	TRENCH 750 - CABLE TRENCH RAMP
D-DT-5254	SHEET 5N	TRENCH 750 - 'X' TO 750 - STRAIGHT 1500
D-DT-5254	SHEET 5M	TRENCH 1500 - 'X' TYPE A TO 1500
D-DT-5254	SHEET 5L	TRENCH 750 - 'X' TYPE B TO 750
D-DT-5254	SHEET 5K	TRENCH 750 - 'X' TYPE A TO 750
D-DT-5254	SHEET 5J	TRENCH 1500 - 'T' TO 1500
D-DT-5254	SHEET 5I	TRENCH 750 - 'T' TO 1500
D-DT-5254	SHEET 5H	TRENCH 750 - 'T' TYPE B TO 750
D-DT-5254	SHEET 5G	TRENCH 750 - 'T' TYPE A TO 750
D-DT-5254	SHEET 5F	TRENCH 1500 - 90 DEG TYPE A BEND
D-DT-5254	SHEET 5E	TRENCH 750 - 90 DEG TYPE B BEND
D-DT-5254	SHEET 5D	TRENCH 750 - 90 DEG TYPE A BEND
D-DT-5254	SHEET 5C	TRENCH 750 - STRAIGHT TO 1500
D-DT-5254	SHEET 5B	TRENCH 1500 - STRAIGHT
DRG NO.	SHEET NO:	REFERENCE DRAWINGS:

THIS DRAWING IS THE NEW OFFICIAL REVISION AND IT SUPERSEDES ALL OTHER PUBLISHED DRAWINGS						
					/ /	
0	FIRST ISSUE				/ /	
REV	REVISION DESCRIPTION	BY	CHKD	AUTH	DATE	PROJECT NO.
		SUBSTATION TRENCH 750mm WIDE - STRAIGHT INSTALLATION AND SECTIONS				
AUTH:	N WEBBER					
DATE:	13/08/2014					
CHKD:	B HLOMENDLINI					
DATE:	06/08/2014	D-DT-5254		SET	SHEET	REVISION
DRAWN:	G BEETGE				5A	0
DATE:	15/04/2014					

1

2

3

4

5

6

7

8

9

10

11

12

A2L